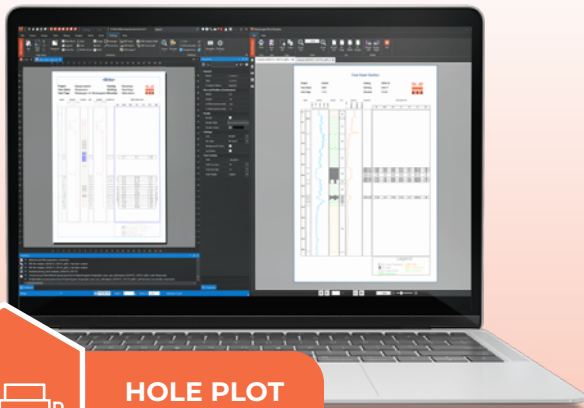


MINESCAPE 2023 UPDATE 4 RELEASE NOTES

About this Release

MineScope 2023 Update 4 continues to elevate the MineScope experience through a range of eagerly awaited improvements. Building on the success of the prior release, this version introduces an array of new capabilities, features, and vital bug fixes. The MineScope team is excited to present these advancements, confident they will greatly enhance the overall user experience.

TOP NEW FEATURES

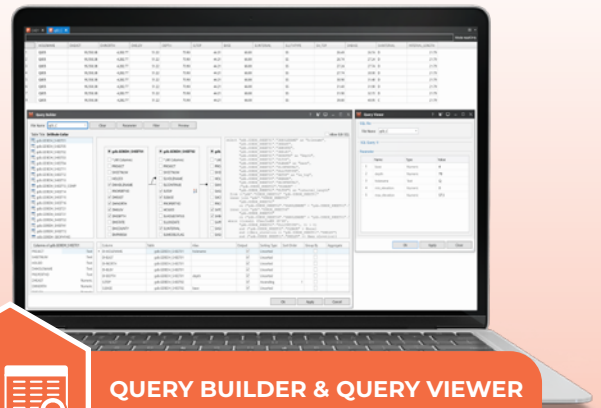


HOLE PLOT

Transform hole plots as PDF reports by leveraging **GDB**-specific containers in the **Plot Designer** App.

Key features:

- ✓ More interactive
- ✓ Easily generate hole plots into PDF reports
- ✓ 5 new **GDB**-specific containers in the **Plot Designer** App
- ✓ A pre-defined template to get users started



QUERY BUILDER & QUERY VIEWER

Simplify SQL query creation process with intuitive user-interface.

Key features:

- ✓ The **Interactive Mode** offers a guided approach that is beginners-friendly
- ✓ Support parameters to easily adjust query inputs
- ✓ Preview outcomes before running queries to minimise errors
- ✓ Update parameter values and run queries quickly in the **Query Viewer**
- ✓ Display query results in the **Table Editor** and export them to CSV for easy data sharing



CORE

IMPROVED Updated **Terms & Conditions** in alignment with the latest document from the Datamine legal team



CAD

IMPROVED MineScape now allows for a maximum of 2047 connections to the design file server



BLOCK MODEL

IMPROVED **Block Model** now support mesh as input

IMPROVED Increased the maximum attribute limit for categorisation to 1,000 and the combination category to 10,000



STRATMODEL

NEW Added the **Post Line** Option, previously available only as a user command, under the **Posting** Dropdown menu



GDB

NEW **Wireline** and **Histogram** traces in 2D and 3D now support base-10 logarithmic scaling

IMPROVED Added ability to update values for other drill holes without restarting selection process in **Drill Hole Edit** Form

IMPROVED Enhanced the **Interval Summary Report** output to support lith depths



UG COAL

IMPROVED Merged the **Polygon Fill**, **Line to Pillar**, and **Networks** Options in the **Pillars** Tab into the **Create** Option for a streamlined pillars creation process

IMPROVED Enhanced the **Split Pillar** Option to generate a new roadway when splitting a pillar

IMPROVED Improved the **Join Pillar** Option to automatically remove the road element located between two joined pillars

IMPROVED Added barrier pillars in the UG mining blocks output for longwall

IMPROVED Users can now assign colours to all generated mesh types in the UG mining blocks for longwall (pillars, mains, gates, longwalls, roadways, and installations)

IMPROVEMENTS FOR EVERYONE:

Analyse Trends in Table File Easily

Users can now dynamically style table cells based on specified conditions in the **Table Editor** Tool, improving data visualisation and readability.

- ✔ Simplifies data analysis by automatically highlighting important or out-of-range values
- ✔ Offers spreadsheet-like flexibility for setting custom rules (e.g., cell colour, text colour)
- ✔ The **Manage Rules** Option centralises rule management in a single interface for easy updates
- ✔ Instantly reverts to the default view via **Clear Rules**, making it quick to remove all styling
- ✔ Enhances clarity and decision-making by drawing attention to key data points at a glance



NO	SEAM	RESOURCE	THICKNESS	PLANNED	STATUS	UNDERGROUND	RESOURCES	RESOURCES
C12001	AC	MINE_ROOF	19420	1.98E+03	19420	19420	19420	19420
C12002	AC	UNDERGROUND	145.43	1.93E+02	16184.5	1514	19420	19420
C12003	AC	MINE_ROOF	19420	1.93E+02	16184.5	1514	19420	19420
C12004	AC	RESOURCE	19420	1.93E+02	16184.5	1514	19420	19420
C12005	AC	UNDERGROUND	19420	1.93E+02	16184.5	1514	19420	19420
C12006	AC	MINE_ROOF	19420	1.93E+02	16184.5	1514	19420	19420
C12007	AC	RESOURCE	19420	1.93E+02	16184.5	1514	19420	19420
C12008	AC	UNDERGROUND	19420	1.93E+02	16184.5	1514	19420	19420
C12009	AC	MINE_ROOF	19420	1.93E+02	16184.5	1514	19420	19420
C12010	AC	RESOURCE	19420	1.93E+02	16184.5	1514	19420	19420
C12011	AC	UNDERGROUND	19420	1.93E+02	16184.5	1514	19420	19420
C12012	AC	MINE_ROOF	19420	1.93E+02	16184.5	1514	19420	19420
C12013	AC	RESOURCE	19420	1.93E+02	16184.5	1514	19420	19420
C12014	AC	UNDERGROUND	19420	1.93E+02	16184.5	1514	19420	19420
C12015	AC	MINE_ROOF	19420	1.93E+02	16184.5	1514	19420	19420
C12016	AC	RESOURCE	19420	1.93E+02	16184.5	1514	19420	19420
C12017	AC	UNDERGROUND	19420	1.93E+02	16184.5	1514	19420	19420
C12018	AC	MINE_ROOF	19420	1.93E+02	16184.5	1514	19420	19420
C12019	AC	RESOURCE	19420	1.93E+02	16184.5	1514	19420	19420
C12020	AC	UNDERGROUND	19420	1.93E+02	16184.5	1514	19420	19420
C12021	AC	MINE_ROOF	19420	1.93E+02	16184.5	1514	19420	19420
C12022	AC	RESOURCE	19420	1.93E+02	16184.5	1514	19420	19420
C12023	AC	UNDERGROUND	19420	1.93E+02	16184.5	1514	19420	19420
C12024	AC	MINE_ROOF	19420	1.93E+02	16184.5	1514	19420	19420
C12025	AC	RESOURCE	19420	1.93E+02	16184.5	1514	19420	19420

In addition to the new features, the MineScape Team has made improvements in the following areas:

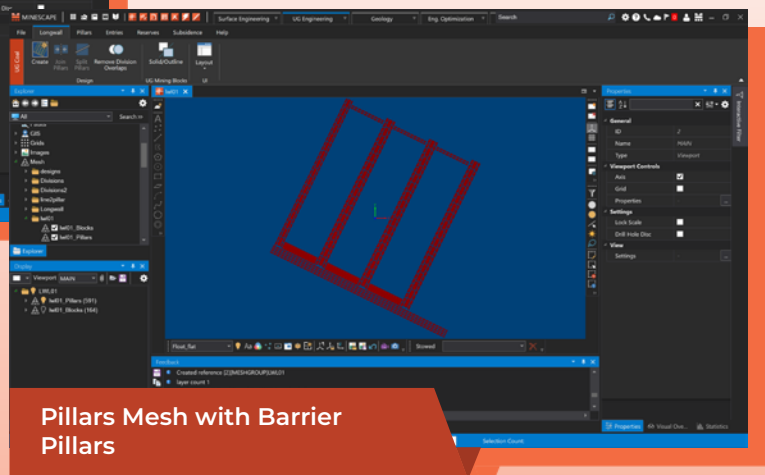
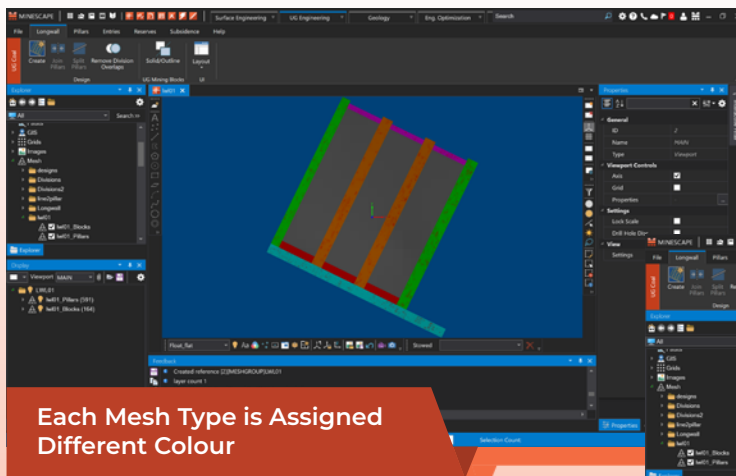
- ✔ CAD
- ✔ Dragline
- ✔ Properties
- ✔ Stratmodel
- ✔ Block Model
- ✔ GDB
- ✔ Watershed Analysis

Check the Release Notes within MineScape for more information

DID YOU KNOW?

Take advantage of flexible colour assignments for UG Mining Blocks!

When generating UG mining blocks for longwall, users can now assign colours to all mesh types (pillars, mains, gates, longwalls, roadways, and installations) to provide clear visual cues for underground scheduling. Additionally, barrier pillars are automatically generated when a **Barrier Width** is specified in the **Longwall** Sub-Node, ensuring more comprehensive outputs than before.





CONTACT US



DATAMINE

AMERICA

Denver, Colorado
+1 303 985 7713

Santiago, Chile
+1 303 985 7713

EUROPE, MIDDLE EAST & SOUTH AFRICA

Czech Republic, Europe
+420 735 161 433

Johannesburg, South Africa
+27 11 772 7960

ASIA PACIFIC

Brisbane, Australia
+61 7 3248 0070

Jakarta, Indonesia
+62 813 3962 9251
+62 812 2030 4032

 support.minescape@dataminesoftware.com

 www.dataminesoftware.com



CONTACT US



WWW